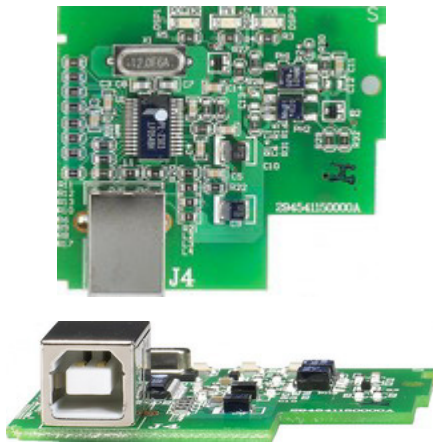


CME-USB01 USB Interface for VFD-E Series Instruction Sheet

- ◆ Please thoroughly read this instruction sheet before installing option cards and putting them into use.
- ◆ The content of this instruction sheet may be revised without prior notice. Please consult our distributors or download the most updated version at <http://www.delta.com.tw/industrialautomation/>.

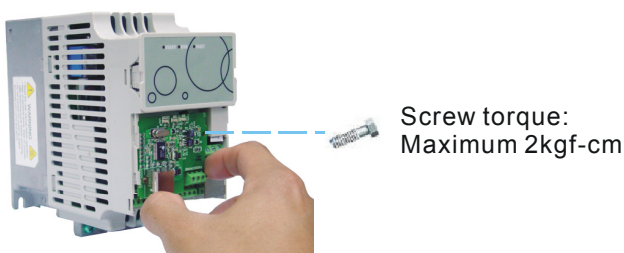
1 Layout

USB Card (CME-USB01)

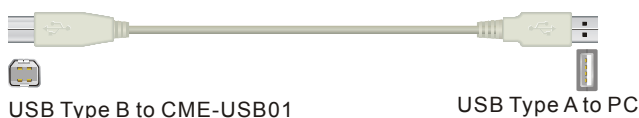


2 Installation

- Make sure that the AC Motor Drive is powered off before operation. DO NOT insert or remove the card when the AC Motor Drive is powered on.
- Please mount the extension card as shown and fix it with the screw packed with the card.



■ USB Cable



NOTE

- Refer to Chapter 5: Parameters 9 (Group 9) in the user manual for further details.

3 Specification

■ Environmental

Operating Temperature	-10°C to 50°C (non-condensing and not frozen)
Storage Temperature	-20°C to + 60°C
Ambient Humidity	Less than 90%RH (non-condensing)
Installation Altitude	Below 1000m
Vibration	Less than 20Hz: Maximum 9.81 m/s ² (1G); 20 ~ 50Hz: Maximum 5.88 m/s ² (0.6G)

NOTE

- Always use this product in a clean indoor location free from dust, corrosive gas and liquid.

■ Inputs/Outputs

Baud Rate	Supports 4800, 9600, 19200, 38400, 57600 bps.
USB Specification	USB v1.1

4 Notes

- Please use shielded wires to avoid interferences and connect the shield to ground.
- To avoid interference, route the extension card wires separately and as far away (at least 15cm) as possible from other control wires, motor wires and power wires, etc. Where these wires must cross each other, please make sure they are at a 90° angle.
- Always use and operate this product within the limit of its specifications.